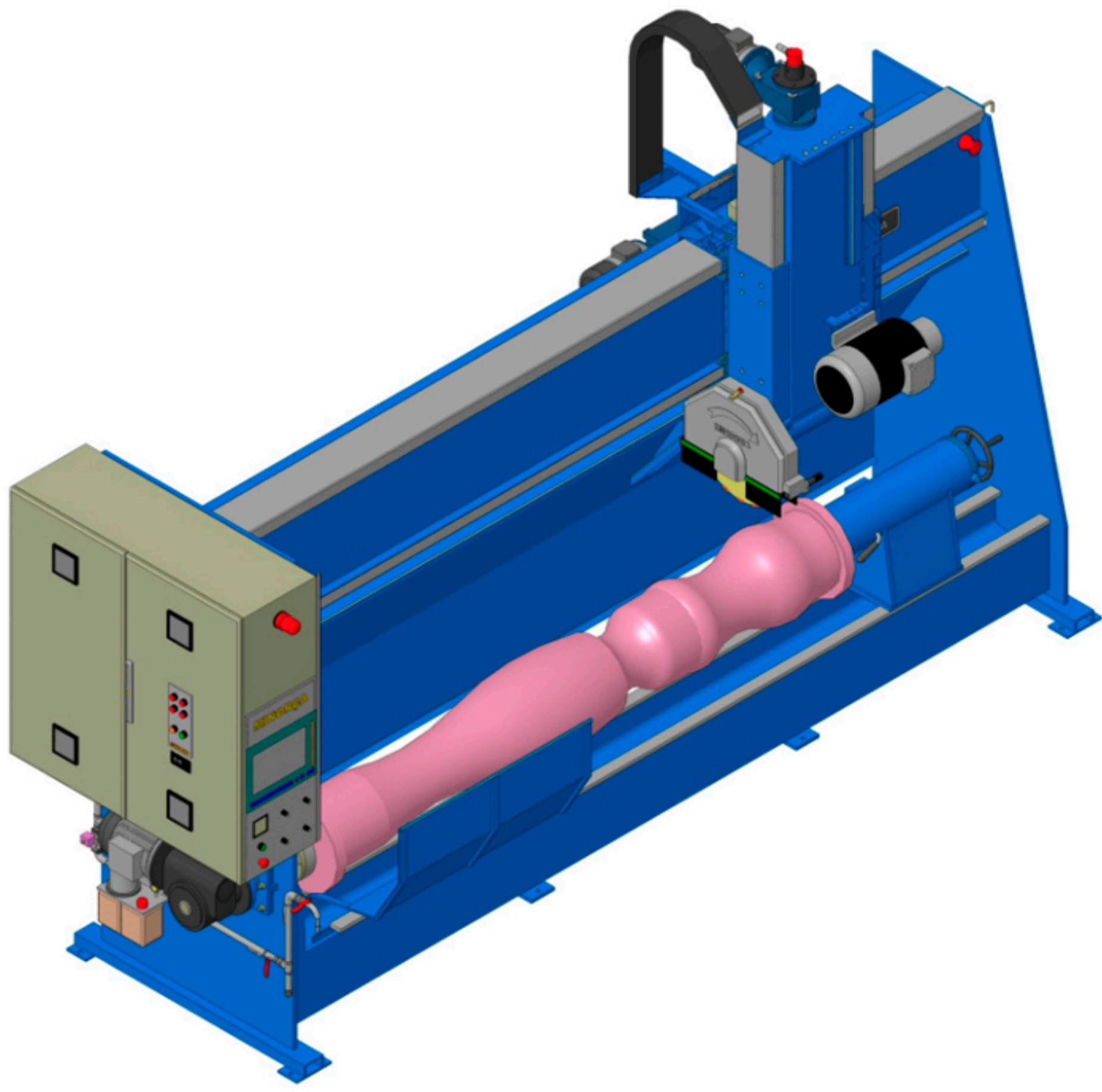


Monoframe Lathe With Draw System

MONOBLOC SPHERICAL LATHE



About

Developed for fully automatic operation, which is programmed on the equipment itself by drawing straight line and arc segments. It also allows controlling the cut and rectifying speeds, it will leaving the piece totally clean and ready to be polished.

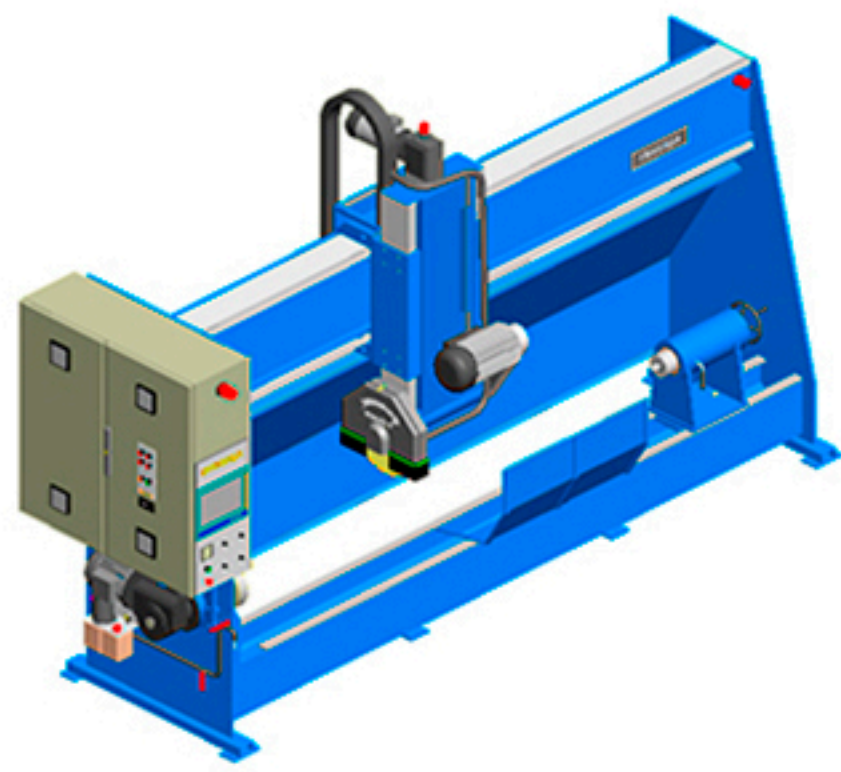
The displacement of the axes is done with electrical engines through linear guides placed on rectified beds. Since produce balustrade or round columns, the system allows regulate velocity, control the drop into the material, adjust the end of cut leaving the required space to move on both axis providing an cleaning and round surface.

Supplied in monoblock frame will be easy the installation, also the transference on site.

We produce automatic lathes since 1982 with this monoframe concept on 1984.

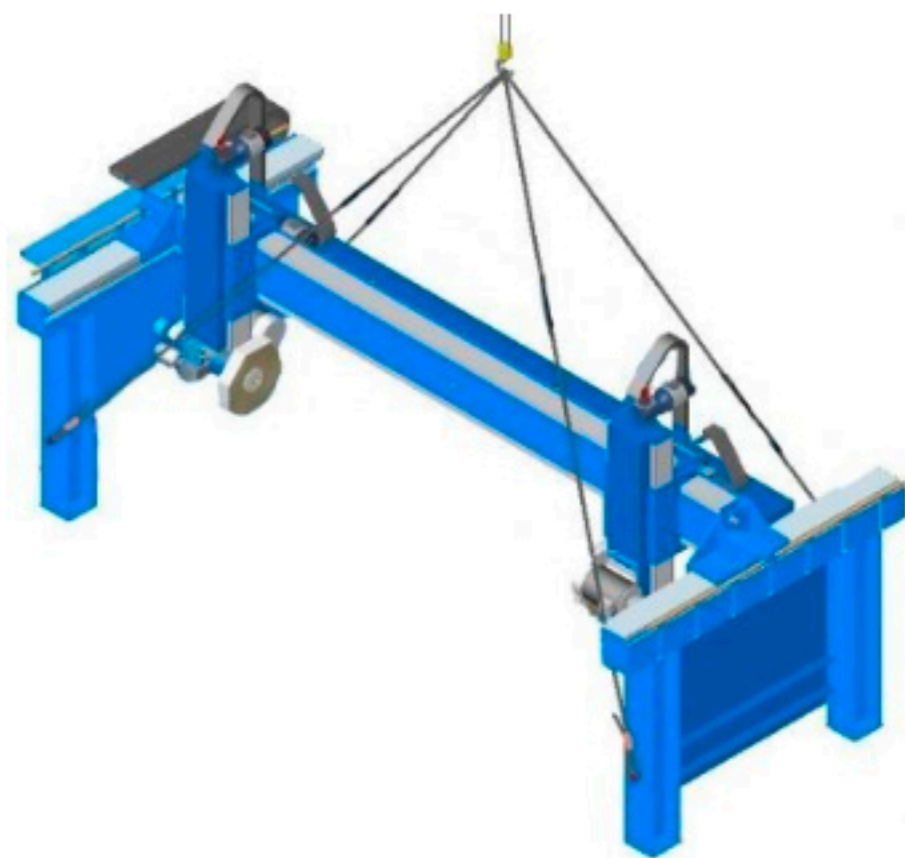
Technical Features

- CUTTING AND GRINDING READY TO POLISH, DRAWING PROGRAM
- ✓ Diameter of disc admitted – 35 cm to 17.1/2 in / 45 cm (for+ optional)
- ✓ Maximum cutting height – aprox. 6 in / 155 mm (Falange support 140mm)
- ✓ Turning capacity – 118 in / 3 mt / 19.1/2 in / 0.5 mtØ beginning with the 710mm
- ✓ Cutting motor power – 7.5 kw (10hp)
- ✓ Approximate minimum weight – 8.200 lbs / 3.730 Kg
- ✓ Maximum height required – 130 in / 3.3 mt
- ✓ Bridge length (for+ optional) – 157.1/2 in / 4 mt
- ✓ Maximum speed head displacement – 4 mt/minute
- ✓ Minimum peripheral speed for cutting – 26 or 47 mt/second



Fixed Bridge Saw over Lathe Spindle Monoframe

DOWNLOAD PDF



Two gammas allowing full cutting capacities with the use of minimum workable length 118 in / 3 mt and maximum on special size of 394 inch / 10 meter, providing a top range over high thickness.

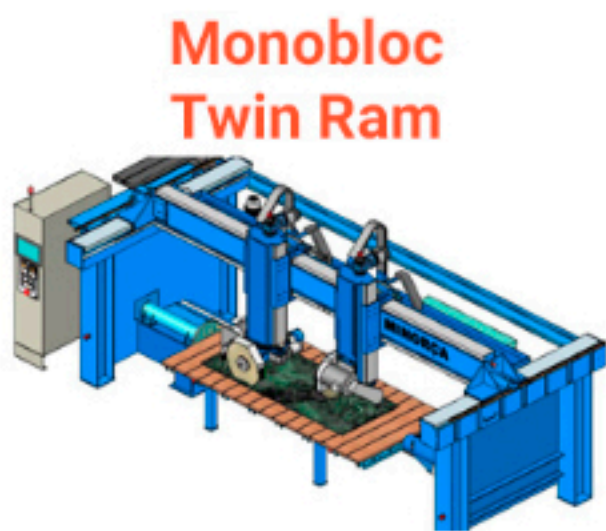


The base equipment is defined to have an high range over daily work
(Can define over the maximum length the work type as with twin ram, the travel)

Pulleys Flange over base frame
6 in / 15.5 cm disc 17.1/2 in / 45 cm

Over Maximum Fastness
9.5/16 in / 23.7 cm disc 28.1/2 in / 72.5 cm
16.5/8 in / 42 cm disc 43 in / 1.1 mt
19.11/16 in / 50 cm disc 51 in / 1.3 mt
23.5/8 in / 60 cm disc 63 in / 1.6 mt

(With the need to perform channels, boxes, spirals, milling bases must adopt an moving bridge)



Monobloc Twin Ram



Multi-Purpose Bridge Machine

HERCULES SERIES
GAMA 300 & 500
MODEL defined by
max. cut - 20 in / 51 cm;
Bridge length 236 in / 6 mt

HERCULES SERIES
264 in / 6.7 mt Travel
Bridge length 295 1/2 in / 7.5 mt
303 in / 7.7 mt Travel
Bridge length 334 1/2 in / 8.5 mt

Working Types



Balustrade And Columns In Round Shape

Can do with proper cad program worked stones in several materials and also forms, like final quality, that one can be perfect, ready to polish

Specific Frame Adjusted to Increase Proper Work

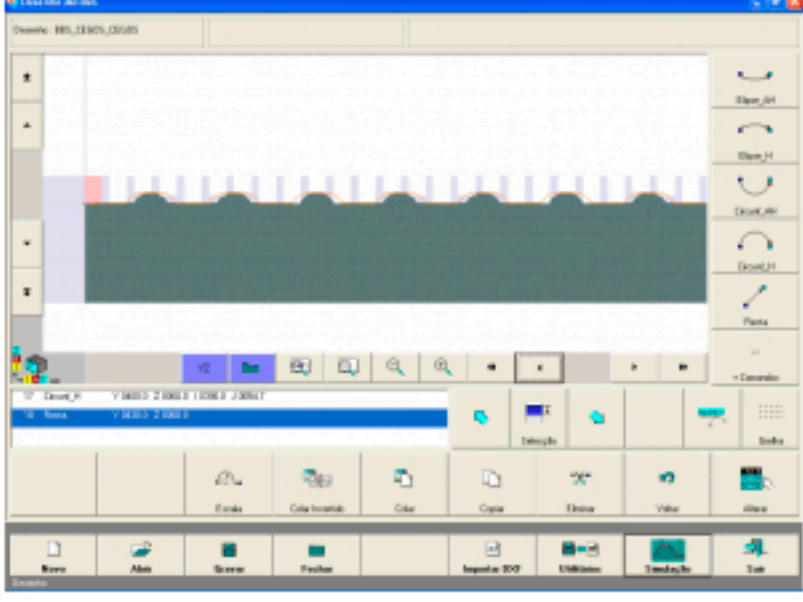
- Particular Cad Draw Programing
- Increase Potential
- Lateral Pillars Solutions
- Displacement Cutting Cars
- Twin RAM over Monobloc
- Severall Length on Bridge
- Easy Assembly and Durability
- Common Parts
- Foot Print
- On Request Part's

A Solid Program with Single-Service and Pre-Forms Concept



With the internal use of cad system, machines can cut surfaces without external resources.

Defined the spacing between cuts



The distance limits, as the distance of the vertical cut in a protrusion (avoiding premature material removal) and the distance between cuts (as a way to speed up the process or improve the preparation for the final cleaning), are defined as the base design. This is something that can only be obtained in specific sequence for the quantity of stones.

Gallery



CONTACT US

Rua do Bairro Novo - Igreja Nova
2640-327 Mafra - Lisbon District
Portugal - Europe

GPS Coordinates: 38°54'54.7"N 9°19'00.2"W
Google Coordinates: 38.915190, -9.316720

Direct Phone: +351 - 918 676 356
Fix Phone: +351 - 219 670 278

GMT +0 Working Time 8am - 5pm
Fax: +351 - 219 670 330
Whatsapp: +351 - 918 676 356